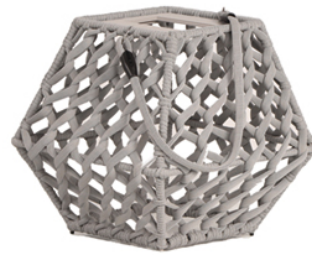




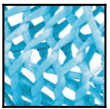
## Lampe de table solaire

Lampe de table solaire - Structure aluminium et tressage tube polyester

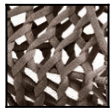
**Collection**  
Yakimour



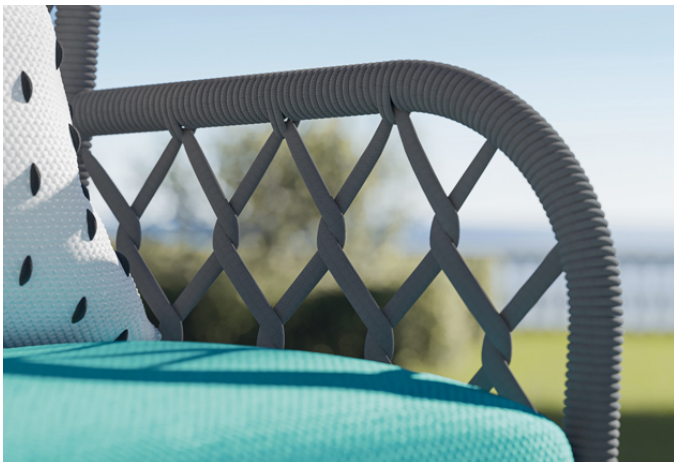
### Structure



Turchese  
YA26



Light grey  
YA28



### Caractéristiques

Dimensions : 47 × 47 × 45 cm

Poids brut : 0 kg

Poids net : 6 kg

Volume : 0.13 m<sup>3</sup>

Structure : Aluminium laqué

Matière : Polyester tissé