



Table basse 140 x 80 cm

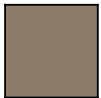
Table basse 140x80cm avec structure aluminium et plateau céramique ou Synteak

Collection

Konic



Structure



mat moka
AL02

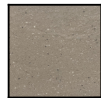


mat grey
AL08

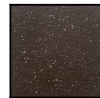


mat blanc
AL04

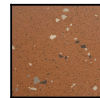
Plateau



TR4
TR4



TR5
TR5



TR6
TR6



teak
VI20



Caractéristiques

Dimensions : 140 × 80 × 30 cm

Poids brut : kg

Poids net : 36 kg

Volume : 0.45 m³

Structure : Aluminium laqué

Plateau : Céramique ou Synteak